

The image features four potted plants arranged in a row against a light gray background. From left to right: a small cactus in a light blue metal bucket, a white ceramic pot (partially obscured), an aloe vera plant in a white ceramic pot, and a succulent in a light blue metal bucket. The text is overlaid on the right side of the image.

“Creating a ‘Common’ Ground for Student and Faculty Support”

Morgann Quilty, Associate Dean

Jane Smith, Instruction Librarian

Lori Wendt, Instructional Technology
Specialist



About us

Parkland College

District 505

Champaign, Illinois

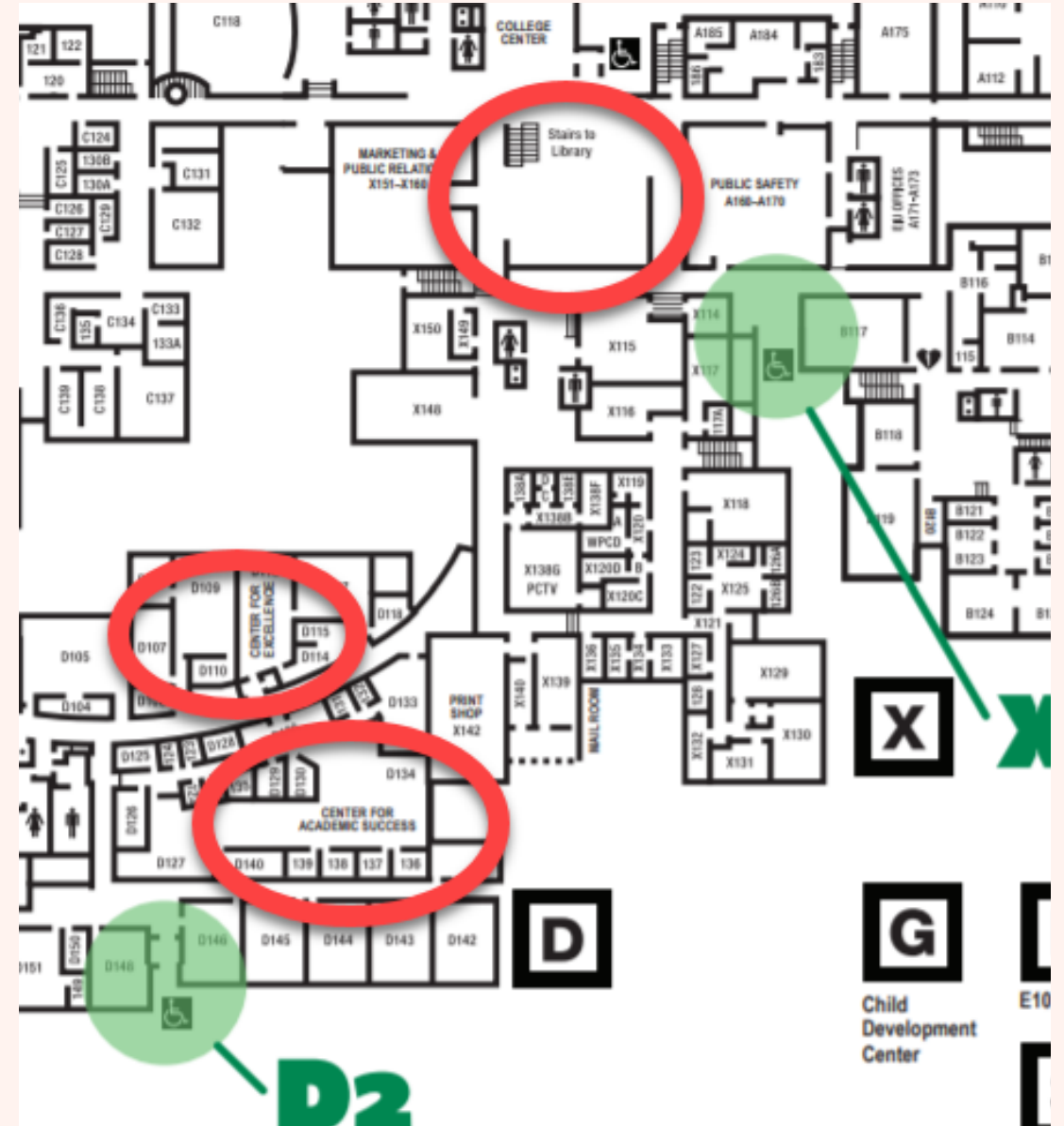


Student Support

- Center for Academic Success (D120)
 - Writing Lab
 - Peer Tutoring
 - Academic Development
- Library (X wing /R)
- Presentation Center (C wing)
- Computer Technology Center (second level D wing)

Location, Location, Location

- D Wing (upper and lower)
- X Wing
- C Wing
- U Wing



Time for Change

Learning Support

Library

Center for Academic Success

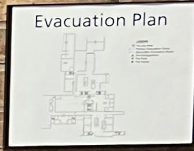
Professional Development and
Instructional Technology

Computer Technology Center is
under the Business/Computer
Science department

Presentation Center is under the
FAA/Humanities department



Learning Commons



STAIRS

wh

Ben & Jerry's
Peanut Butter W

This ↓
Ben & Jerry's
Chocolate Fudge
brownie

Mango

Strawberry

Rocky Ro

And thus, the Learning Commons was born.



[This Photo](#) by Unknown Author is licensed under [CC BY](#)

SWOT

Strengths

- Centralized location
- Team environment
- Physical space (so much of it)
- Continuation of services with little disruption from moves
- College television station falls under this division

Opportunities

- Piloting initiatives for instructional technologies
- Expansion of online support services
- Grant opportunities for larger “entity” rather than smaller individual units as before

Weaknesses

- Personnel struggles with move
- Communication of intent by college
- Physical space (layout)
- Online environment (Teams) struggles

Threats

- Momentum
- Administration can change mind
- Funding (when grants run out)



Strengths

Centralize Location & Space

- Library was already occupying two stories at the center of the college campus

Team Environment

- One large cohesive team instead of smaller groups

Un-interrupted Service

- During construction and software updates, we were still open for business

PCTV

- Professional television studio and staff to create instructional videos as well as television programming



Weaknesses

Personnel

- Change is hard

Communication

- Managing perceptions

Space

- Lots of it, but oddly positioned architecturally

Technical Issues

- Institutional technology changes at same time

Opportunities

Instructional Tech Pilots

- Faculty support
- Student engagement

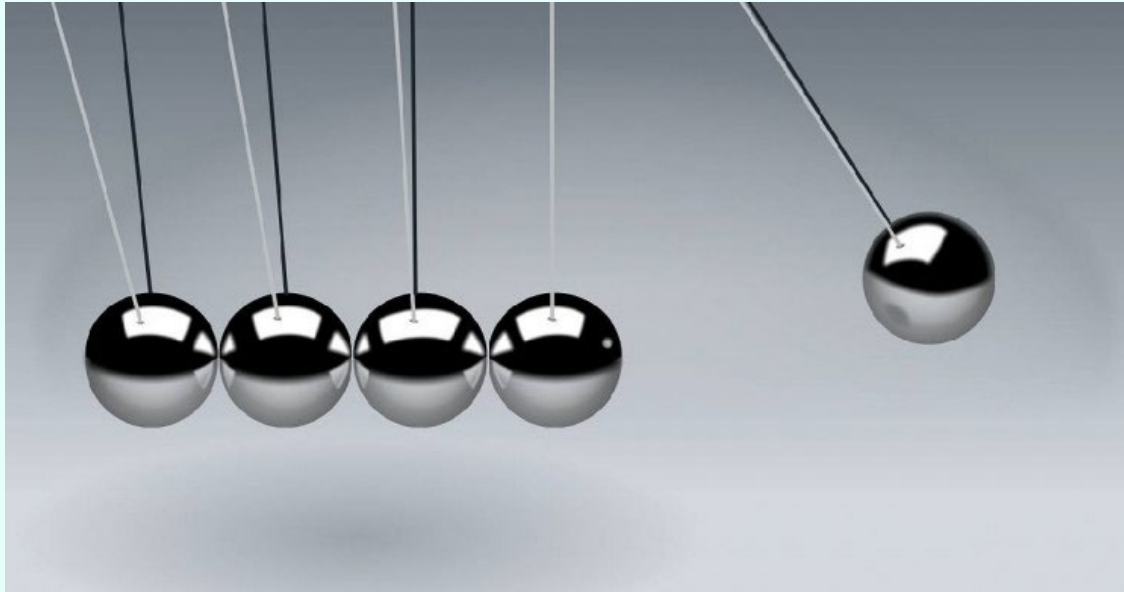
Online Program Expansion

- Online tutoring
- Writing Lab
- Presentation Center
- Computer Technology Center

Grant Funding

- Larger division versus smaller units





Threats

Momentum

- Good now, but what if runs out?

Administration

- What if change minds?

Funding

- What if grants dry up?



Results (so far)

- Tracking system in place to collect student visits
- Grant funding for more tutors
- Grant funding for accessibility remediation
- Training sessions



Future Growth

- Addition of tutoring for more courses
- Addition of academic development support
- Instructional technology training/support
- Presentation Center
- Computer Technology Center
- Television programming for community learning

Questions?

Thank You!



[This Photo](#) by Unknown Author is licensed under [CC BY-NC](#)